

# DJM pro audio systems

IF YOU WORK FOR A  
CHURCH, CLUB,  
RESTAURANT, AUDITORIUM,  
SPORTS COMPLEX,  
SCHOOL, OFFICE,  
CONTRACTOR OR ELECTRICIAN  
YOU SHOULD WORK WITH US.

*We're DJM Pro Audio Systems.  
A young, high tech company  
that employs the very latest in audio  
and sound equipment  
specifically suited to your needs.*

## DJM'S GOT THE BEST LINES

And many more that other "sound companies" don't, like Peavey, JBL, Nady, DOD, Yamaha, Bose, Altec and more. That means we can offer you more flexibility and a cost-effective system at the same time.

## DJM'S GOT GREAT IDEAS

DJM's technicians and engineers work with the latest technology and equipment on the market so that you gain the full benefit and effectiveness of ground breaking audio advances.

## DJM'S GOT THE WHOLE PACKAGE

DJM provides in-house consultation, design, installation and service backed by New England's leading musical retailer.

CALL THOM STOLAR FOR A FREE ESTIMATE

**DJM Pro Audio Systems**

P.O. Box 1018, Salem, NH 03079 (603) 893-4057

FLOYD ROSE  
CONTINUED FROM PAGE 51

dreaming. Now I feel like it couldn't have worked out any better.

*It comes through in the quality of the product.*

And getting better too. We're really refining the process. I'm getting more involved with things I wasn't really involved in before because Edward was doing more of that and I didn't want to get in the way of that.

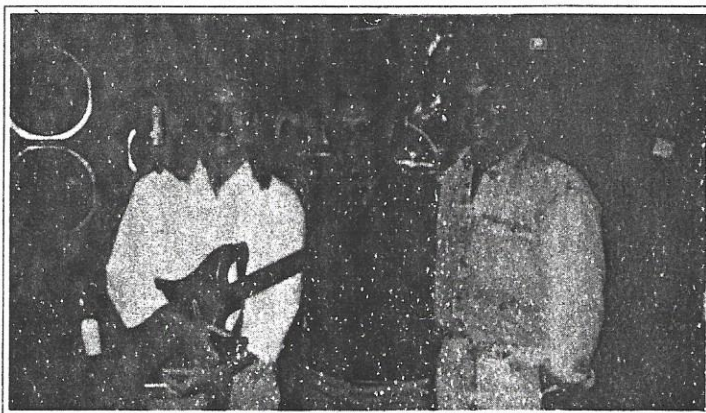
*So Eddie was coming in saying how he wanted it?*

He was really a big help. They really lacked a lot of knowledge until Edward got in there. Now, he's still having input but he's locked into things a little bit. It's a real grind to keep after it over and over again.

*Sometimes there's not a lot of glamour in that aspect of it. The working out of details and such.*

Exactly. There isn't.

*What's the deal with the new tremolo?*



*Floyd Rose, Daddy's President Fred Bramante, and president of Kramer guitars Dennis Berarai at Daddy's Boston store.*

We wanted to come out with a version that answered some of the problems that people have asked about and some of the problems that I had when we went to manufacture in Germany. Small things, really. Like where the fine tuners are on the bass plate? A lot of people have trouble with that being in the way of the hand. When we did it originally, we knew that was a problem but it was more of a problem in the design that we were going to. But you really have to do a more serious routing job and the resistance was already so high that we did it the way we did it. In fact, you know the whale tail design? Edward was indirectly responsible for it happening that way. I did the design but it was a conversation with him that convinced me that we had to move the fine tuners even further out of the way and give them more range.

*It must be pretty exacting work in production actually for the tolerances that have to be met?*

Well, it is. There are bridges out there that are made like the Floyd Rose II with the soft metal. It's a lot different really. They cost us \$60. Other bridges cost \$12. You get what you pay for. They're (the cheaper tremolos) not built to last a lifetime of guys just wham, wham, wham! These are. That's what they're made for, because that's the way I play, and that's the way I like to use it.

